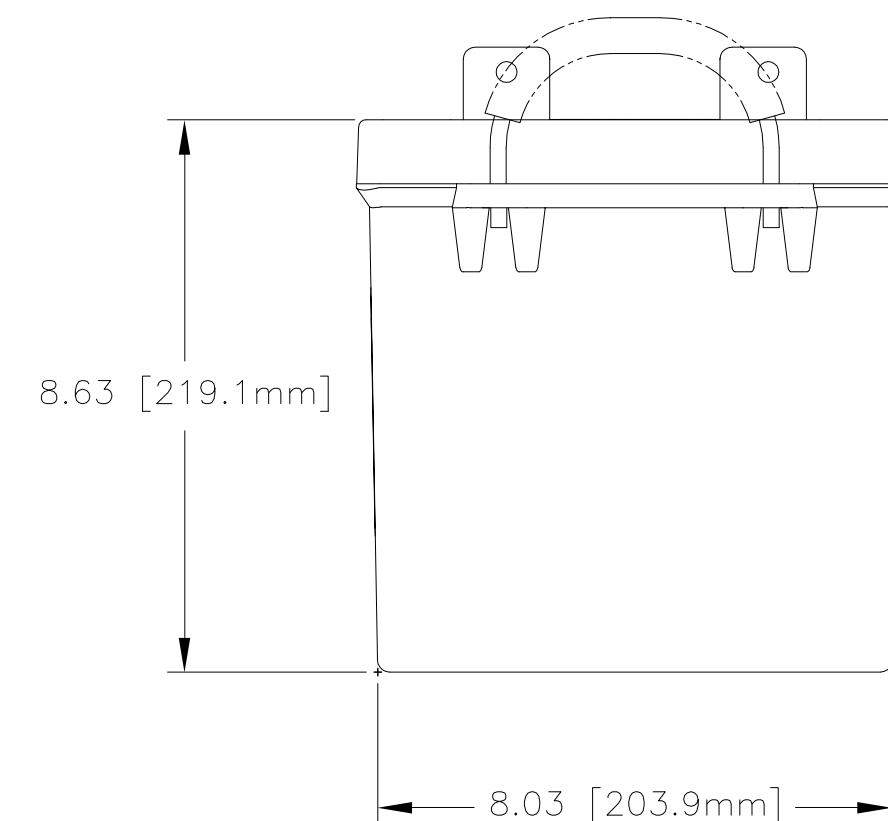
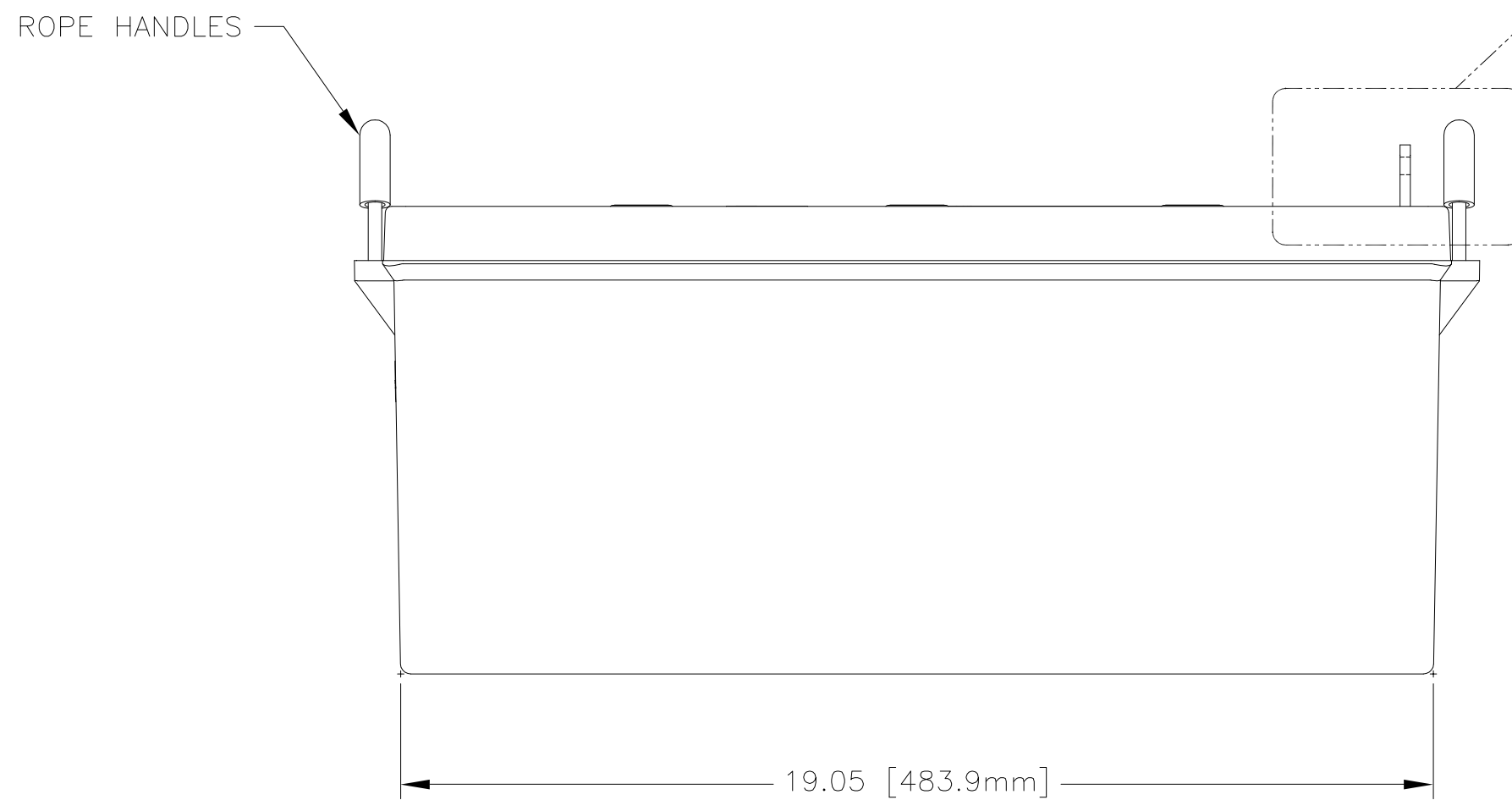
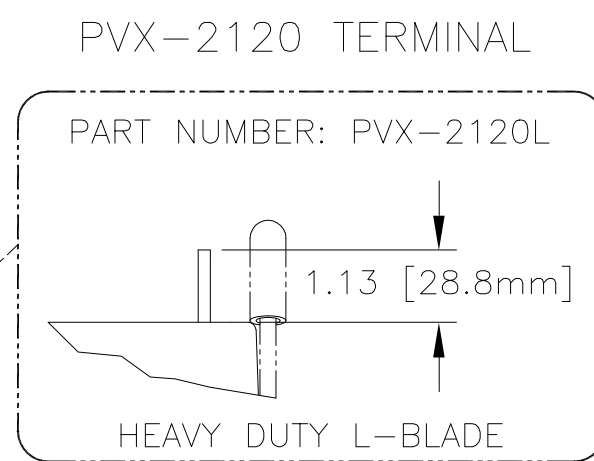
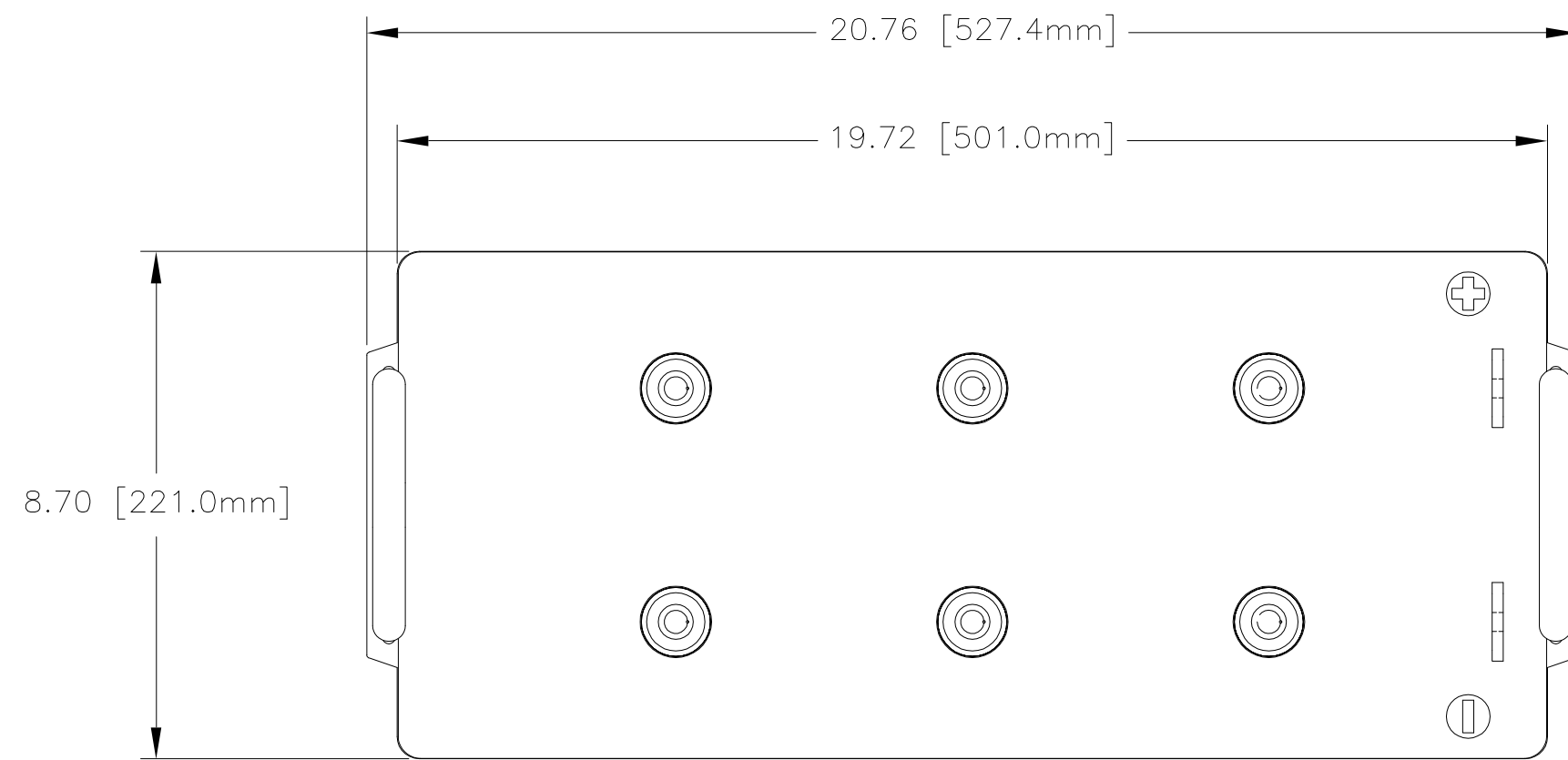


NOTES: UNLESS OTHERWISE SPECIFIED

1. SEE DRAWING NO. CB-00294 AND PROCEDURE P-1000 FOR ASSEMBLY AND TEST INSTRUCTION. PROCEDURES AND ASSEMBLY DRAWINGS ARE FOR INTERNAL USE ONLY.
2. ALL TESTING ARE IAW BATTERY COUNCIL INTERNATIONAL STANDARDS.
3. ALL DIMENSIONS ARE IN INCHES [MM].
4. ABBREVIATION USED IN TITLE IS: SEALED LEAD ACID (SLA).

REVISIONS			
REV	DESCRIPTION	DATE	APPROVED
A	REDESIGNED CASE AND COVER	1/22/03	JBT



ENVELOPE DRAWING

CAPACITY RATINGS	
PART NUMBER	PVX-2120
NOMINAL WEIGHT	138 LBS[62.7 KG]
AMPERE HOUR CAPACITY @ 24 HOUR 1.75 VOLTS/CELL @ 77°F (25° C)	212 AH

QTY REQD	CAGE CODE	PART OR IDENTIFYING NO.	NOMENCLATURE OR DESCRIPTION	MATERIAL SPECIFICATION	ITEM NO.
PARTS LIST					
UNLESS OTHERWISE SPECIFIED DIMENSIONS ARE IN INCHES TOLERANCES ARE:			CONCORDE BATTERY CORPORATION 2009 SAN BERNARDINO RD, W. COVINA, CA 91790		
FRACTIONS	DECIMALS	ANGLES	TITLE		
± 1/32	.XX ± .06	± 1°	BATTERY, SLA, 12 VOLT, PVX-2120		
	.XXX ± .030		APPROVALS	DATE	SIZE
TREATMENT	NONE	CHECKED	ELH	8/13/01	CAGE CODE
FINISH	NONE	APPROVED	JBT	8/23/01	DWG NO.
SIMILAR TO	ACT WT	CALC WT	ISSUED	AT	1/24/03
NA	NA	NA			
			SCALE	NONE	SHEET 1 OF 1